

THE SOCIO-ECONOMIC IMPACT OF UBOMBO SUGAR IN SWAZILAND

2017 HIGHLIGHTS

UBOMBO SUGAR LIMITED'S TOTAL ECONOMIC IMPACT IN SWAZILAND

E3.1 BILLION



SPEND



SALARIES WAGES/BENEFITS

E408 MILLION



UBOMBO SUGAR INDIRECT TAX CONTRIBUTION
E228 MILLION



E34 MILLION

CAPITAL INVESTMENTS IN THE BUSINESS



E3.08 MILLION COMMUNITY INVESTMENTS

STAFF TRAINING
E8.3 MILLION



E1.0 BILLION SPENDING ON LOCAL SUPPLIERS

EMPLOYMENT OPPORTUNITIES CREATED

7 363

TOTAL JOBS CREATED



3 249
DIRECT EMPLOYMENT

SUPPORTING 13 566 LIVES



OF 1 199 PERMANENT EMPLOYEES

178

ARE WOMEN

15%



190
OUTGROWERS

OF WHICH

151
SMALL-SCALE FARMERS

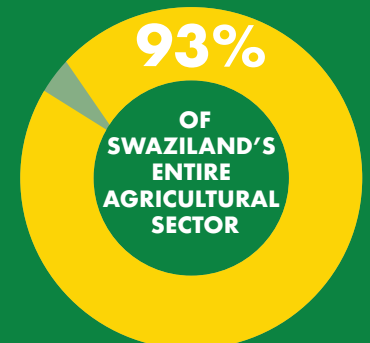


E47 MILLION INVESTED IN A SHARED VALUE PROJECT AT ST. PHILIP'S THROUGH WHICH THE COMPANY, COMMUNITY AND GOVERNMENT HAVE COME TOGETHER TO DEVELOP A **450 HECTARE SUGAR CANE FARM**



E29 MILLION INVESTED IN A PILOT PROJECT TO CONVERT EXISTING IRRIGATION SYSTEMS TO **DRIP IRRIGATION** AS PART OF A EFFICIENT WATER USAGE STRATEGY

ILLOVO'S TOTAL ECONOMIC IMPACT IN SWAZILAND IS 6.1% OF SWAZILAND'S GDP



SIGNIFICANT FOREIGN EXCHANGE EARNINGS BENEFITS ACCRUING TO SWAZILAND FROM EXPORT SALES

ENVIRONMENT



78%

WATER RECYCLED AND RETURNED TO SOURCE



96%

ENERGY CONSUMPTION FROM RENEWABLE SOURCES